



Hett Close Ardingly Haywards Heath RH17 6TE

www.jamesdeanproperty.co.uk





J A M E S D E A N
E S T A T E A G E N T S

Hapstead Mews is situated within the grounds of a former Victorian mansion house in the centre of Ardingly village. This development is packed with character & charm, the well-established communal grounds are simply stunning enjoying views over the surrounding countryside. The village provides a local convenience store and post office, bakery and two public houses known for their fabulous food. It's also a short walk to the South of England Show ground which hosts events all year round. Ardingly also has a well-respected primary school and Ardingly College, providing private education through all age groups. Ardingly is situated approximately 4 miles north of Haywards Heath which offers a good range of well-known high street stores, bars, restaurants and a large leisure centre. Haywards Heath has a fast and frequent commuter service to London (Victoria/London Bridge) in approximately 45 minutes. Gatwick Airport is easily accessed via the M23 motorway, with close links to the M25 motorway. If you're an outward-bound kind of person you



can enjoy wonderful walks locally or take part in the water sports activities at Ardingly Reservoir.

The property is a very well presented two bedroom apartment, entrance hall leading to a modern open plan living room/kitchen with a breakfast bar and fitted appliances. Bedroom one benefits from an ensuite shower room with a well appointed main bathroom located off the hallway. The apartment also benefits from a private garden area and the use of the wonderful well established communal gardens. Gated private parking area with an allocated space & visitor parking.

Five week security deposit: £1,725.00

Council Tax Band: D (£2,080.45) - Mid Sussex

EPC: C

Twelve-month tenancy with a six-month break clause

Household income: £44,850

Parking arrangements: Allocated & Visitors

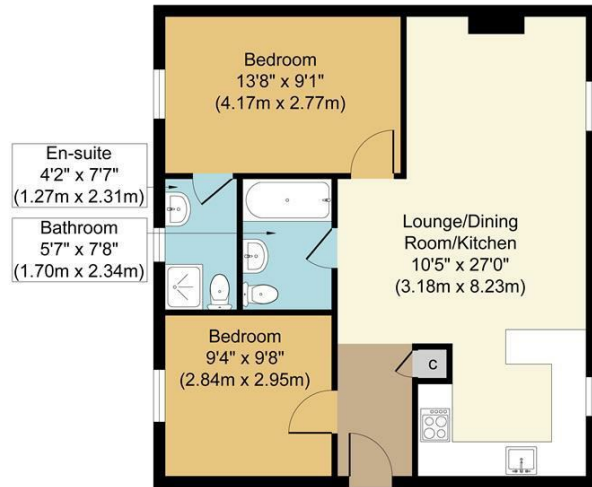
Furnishings: Furnished / Unfurnished

£1,495 Per Calendar Month



Hett Close Ardingly Haywards Heath RH17 6TE £1,495 Per Calendar Month

Floor plan



Approximate Floor Area
651 sq. ft
(60.49 sq. m)

Hett Close, RH17
Approx. Gross Internal Floor Area 651 sq. ft / 60.49 sq. m

Whilst every attempt has been made to ensure the accuracy of the floor plan contained here, measurements of doors, windows, rooms and any other items are approximate and no responsibility is taken for any error, omission, or mis-statement. The measurements should not be relied upon for valuation, transaction and/or funding purposes. This plan is for illustrative purposes only and should be used as such by any prospective purchaser or tenant. The services, systems and appliances shown have not been tested and no guarantee as to their operability or efficiency can be given.
Copyright Property Portraits | www.propertyportraits.co.uk

Energy Efficiency Rating		
	Current	Potential
Very energy efficient - lower running costs		
(92 plus) A		
(81-91) B		
(69-80) C		
(55-68) D		
(39-54) E		
(21-38) F		
(1-20) G		
Not energy efficient - higher running costs		
	78	78
EU Directive 2002/91/EC		
England & Wales		

Environmental Impact (CO ₂) Rating		
	Current	Potential
Very environmentally friendly - lower CO ₂ emissions		
(92 plus) A		
(81-91) B		
(69-80) C		
(55-68) D		
(39-54) E		
(21-38) F		
(1-20) G		
Not environmentally friendly - higher CO ₂ emissions		
EU Directive 2002/91/EC		
England & Wales		

Key information

Viewing: Strictly By Appointment

Fees

Please see below for fees relating to this property.

Reservation Fee

To secure a property through us you will be required to pay a weeks rent as a reservation fee. This takes the property off the market and starts the referencing process.

Move In Balance

On the day of move in you will be required to pay the remaining move in balance. This is as follows:

First Months Rent: £1,495 Per Calendar Month

Security Deposit: £1,725

Any questions please call your local branch.

JAMESDEAN
ESTATE AGENTS

67 HIGH STREET, REIGATE, RH2 9AE
T: 011737 242331 F: 011737 243481
E: reigate@jamesdeanproperty.co.uk

66 VICTORIA ROAD, HORLEY, SURREY, RH6 7PZ
T: 01293 784411 F: 01293 784422
E: info@jamesdeanproperty.co.uk

Please note that no appliances or systems have been tested. All measurements are approximate and must not be relied upon for any purpose. Any appliances listed in these details may not be included in the sale price. These particulars do not form any part of an offer or contract and their accuracy cannot be guaranteed. Lease information where applicable has been provided by the vendor. James Dean cannot be held liable if the information is incorrect.